

ekoboda

BY KRITTERIUM



VENTA POR
CATÁLOGO

PRE 2024
FALL

NUEVA COLECCIÓN



MUST HAVE



Una nueva aventura comienza aquí. Nuestra nueva colección Pre-Fall 2024 es un viaje a través de la moda que te hará lucir maravillosa esta temporada.

Mezcla de texturas, colores, estampados orgánicos y accesorios naturales, prendas inferiores de siluetas amplias para un look moderno muy ADN de marca.

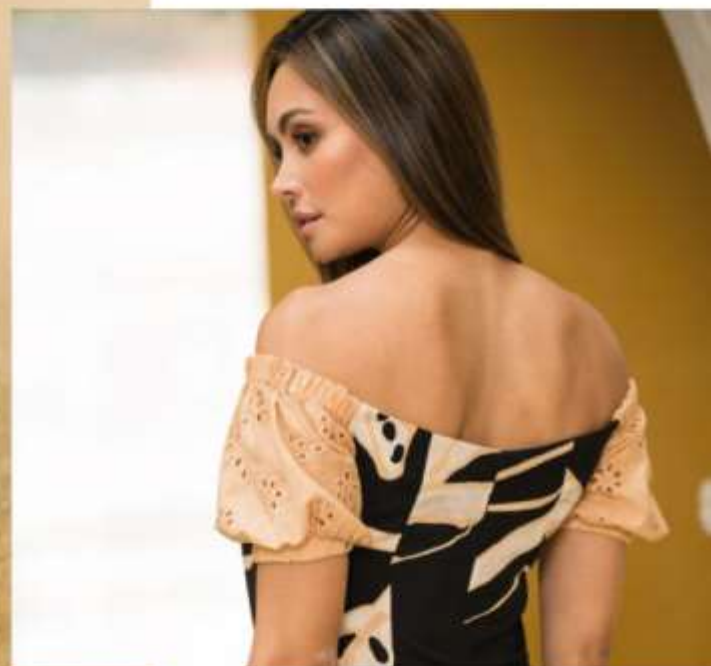


Crop
\$ **129.900**

REF. 3510114

Pantalón
\$ **139.900**

REF. 3310103



Ref. 3510114 Crop top escote corazón con Hojarota en manga Ext: 22 Color: Unico Tallas: XS-S-M-L-XL \$129.900

Ref. 3310103 Pantalón Wid leg corte en delantero Tiro Alto en Rayon 100% Ext: 22 Color: Unico Tallas: 6-8-10-12-14-16 \$139.900



NUEVA COLECCIÓN

PREFALL



Camisera
\$149.900
REF. 3510110

Pantalón
\$139.900
REF. 3310103



TEJIDO
TIPO LINO



Camisera
\$ **149.900**
REF. 3510110

Pantalón
\$ **139.900**
REF. 3310103

Cinturón
\$ **69.900**
REF. 3610008



Ref. 3510110 Camisera manga larga, corte abierto en delantero puño y cuello ancho en tejido tipo lino Ext: 44 Color: Natural Tallas: XS-S-M-L-XL-XXL \$149.900

Ref. 3310103 Pantalón Wid leg corte en delantero Tiro Alto en Rayon 100% Ext: 22 Color: Unico Tallas: 6-8-10-12-14-16 \$139.900

Ref. 3610008 Cinturón reata elástica con hebilla circular en yute Ext: 15 Color: Negro Tallas: 6-8-10-12-14-16 \$69.900

HOJA ROTA
EN MANGA



Crop
\$ **129.900**

REF. 3510114

Pantalón
\$ **149.900**

REF. 4312306

ABERTURA
EN BOTA



Crop
\$129.900
REF. 3510114

Pantalón
\$149.900
REF. 4312306



Crop
\$129.900

REF. 3510114

Pantalón
\$149.900

REF. 4312306



Ref. 3510114 Crop top escote corazón con Hojarota en manga Ext: 22 Color: Unico Tallas: XS-S-M-L-XL \$129.900

Ref. 4312306 Pantalón Palazzo abertura en bota, charretera en Twill Rayon Ext: 67 Color: Crema Tallas: 6-8-10-12-14-16 \$149.900



Top
\$ **99.900**
REF. 3510115

Pantalón
\$ **139.900**
REF. 3310103

ESCALERILLA
EN DELANTERO



Top
\$99.900
REF. 3510115

Pantalón
\$139.900
REF. 3310103



Top
\$ **99.900**

REF. 3510115

Pantalón
\$ **139.900**

REF. 3310103



Ref. 3510115 Top tirantes corte con escalerilla en delantero, en Rayon Twill Ext: 44
Color: Natural Tallas: XS-S-M-L-XL \$99.900

Ref. 3310103 Pantalón Wid leg corte en delantero Tiro Alto en Rayon 100% Ext: 22
Color: Unico Tallas: 6-8-10-12-14-16 \$139.900





Camisera
\$ 149.900
REF. 3510110

Pantalón
\$ 119.900
REF. 3310105





Camisera
\$149.900
REF. 3510110

Pantalón
\$119.900
REF. 3310105



Camisera
\$ 149.900
REF. 3510110

Pantalón
\$ 119.900
REF. 3310105

Ref. 3510110 Camisera manga larga, corte abierto en delantero puño y cuello ancho en tejido tipo lino Ext: 44 Color: Natural Tallas: XS-S-M-L-XL-XXL \$149.900

Ref. 3310105 Pantalón Wide Leg Pretina Alta, posterior resortado en base corrugada Ext: 15 Color: Negro Tallas: 6-8-10-12-14-16 \$119.900

HOJA ROTA
EN MANGA





Vestido
\$ 219.900
REF. 3210107



Vestido
\$ **219.900**
REF. 3210107

Ref. 3210107 Vestido largo falda en tiempos manga corta en hoja rota drapeado en busto Ext: 14 Color: Naranja Tallas: XS-S-M-L-XL \$219.900

ebba KRITTERIUM



A woman with long, wavy brown hair is sitting and looking towards the camera. She is wearing a white, sleeveless top with a draped neckline and a horizontal zipper detail across the chest. She is also wearing white, high-waisted pants with a buttoned waistband. She has a gold-colored watch on her left wrist. The background is a warm, golden-yellow color with soft, out-of-focus architectural elements.

Top
\$99.900
REF. 3510115

Pantalón
\$149.900
REF. 4312306

A woman with long brown hair is standing in front of a yellow wall with arches. She is wearing a white sleeveless top with a cowl neck and a white wide-leg pant with side slits. She is also wearing a white watch and white high-heeled shoes.

Top
\$99.900
REF. 3510115

Pantalón
\$149.900
REF. 4312306



Top
\$99.900
REF. 3510115

Pantalón
\$149.900
REF. 4312306



Ref. 3510115 Top tirantes corte con escalerilla en delantero, en Rayon Twill Ext: 44
Color: Natural Tallas: XS-S-M-L-XL \$99.900

Ref. 4312306 Pantalón Palazzo abertura en bota, charretera en Twill Rayon Ext: 67
Color: Crema Tallas: 6-8-10-12-14-16 \$149.900

A woman with long dark hair is shown from the back, looking over her shoulder. She is wearing a white jumpsuit with thin straps and a high waist. The background features a yellow wall with white arched doorways and columns.

Top
\$99.900
REF. 3510115

Pantalón
\$149.900
REF. 4312306





Blusa
\$99.900
REF. 3510113

Jean
\$189.900
REF. 3810101

Blusa
\$99.900
REF. 3510113

Jean
\$189.900
REF. 3810101





Blusa
\$99.900
REF. 3510113

Jean
\$189.900
REF. 3810101

Ref. 3510113 Blusa cuello camisero, Botonadura delantero, media manga, elástico en ci tura en Algodón Stretch Ext: 14 Color: Naranja Tallas: XS-S-M-L-XL \$99.900

Ref. 3810101 Jean Flare H/R Tono Industrial Denim Stretch Ext: 52
Color: Indigo Tallas: 6-8-10-12-14-16-18 \$189.900





Blusa
\$ 109.900
REF. 3510117

Jean
\$ 189.900
REF. 3810101

Blusa
\$109.900
REF. 3510117

Jean
\$189.900
REF. 3810101



Ref. 3510117 Blusa cuello T, costura acordonada en cuello y puño, cartera sobre hombro, base textil tipo Cupro Ext: 67 Color: Crema Tallas: XS-S-M-L-XL-XXL \$109.900

Ref. 3810101 Jean Flare H/R Tono Industrial Denim Stretch Ext: 52
Color: Indigo Tallas: 6-8-10-12-14-16-18 \$189.900



A full-body fashion photograph of a woman with long, wavy brown hair, smiling. She is wearing a white, short-sleeved top with a ruffled neckline and a small bow at the center. Her pants are a light beige or tan color, straight-leg, and cropped at the ankles. She is also wearing bright orange high-heeled sandals and holding a small, rectangular, vertically striped handbag with a gold-tone clasp and handle. The background is a warm, yellowish wall with a large, arched doorway.

Top
\$119.900
REF. 3510111

Pantalón
\$159.900
REF. 3310104

**COSTURA
ACORDONADA**



ebba KRITTERIUM



Top
\$119.900
REF. 3510111

Pantalón
\$159.900
REF. 3310104



Ref. 3510111 Top volante costura acordonada en Algodón tipo Lino Ext: 44 Color: Natural Tallas: XS-S-M-L-XL \$119.900

Ref. 3310104 Pantalón cintura Alta, pierna angosta, bolsillo ribete tapa en tipo gabardina Ext: 10 Color: Camel Tallas: 6-8-10-12-14 \$159.900



Camisera
\$ **149.900**
REF. 3510110

Jean
\$ **189.900**
REF. 3810101



Ref. 3510110 Camisera manga larga, corte abierto en delantero puño y cuello ancho en tejido tipo lino Ext: 44 Color: Natural Tallas: XS-S-M-L-XL-XXL \$149.900

Ref. 3810101 Jean Flare H/R Tono Industrial Denim Stretch Ext: 52
Color: Indigo Tallas: 6-8-10-12-14-16-18 \$189.900



Camisera
\$ **149.900**

REF. 3510110

Jean
\$ **189.900**

REF. 3810101

Ref. 3510110 Camisera manga larga, corte abierto en delantero puño y cuello ancho en tejido tipo lino Ext: 44 Color: Natural Tallas: XS-S-M-L-XL-XXL \$149.900

Ref. 3810101 Jean Flare H/R Tono Industrial Denim Stretch Ext: 52 Color: Indigo Tallas: 6-8-10-12-14-16-18 \$189.900

Camisera
\$149.900
REF. 3510110

Jean
\$189.900
REF. 3810101







Top
\$119.900
REF. 3510111

Jean
\$189.900
REF. 3810101



Top
\$ **119.900**
REF. 3510111

Jean
\$ **189.900**
REF. 3810101



Top
\$119.900
REF. 3510111

Jean
\$189.900
REF. 3810101

Ref. 3510111 Top volante costura acordonada en Algodón tipo Lino Ext: 44
Color: Natural Tallas: XS-S-M-L-XL \$119.900

Ref. 3810101 Jean Flare H/R Tono Industrial Denim Stretch Ext: 52
Color: Indigo Tallas: 6-8-10-12-14-16-18 \$189.900



Blusón
\$159.900
REF. 3510116

Jean
\$189.900
REF. 3810101



BOTONADURA
EN COSTADOS

Blusón
\$ **159.900**
REF. 3510116

Jean
\$ **189.900**
REF. 3810101





Blusón
\$159.900
REF. 3510116

Jean
\$189.900
REF. 3810101

Ref. 3510116 Blusón cuello camisero, manga 3/4, Botonadura costados, en Rayón Ext: 212 Color: Moca Tallas: XS-S-M-L-XL \$159.900

Ref. 3810101 Jean Flare H/R Tono Industrial Denim Stretch Ext: 52 Color: Indigo Tallas: 6-8-10-12-14-16-18 \$189.900



Blusa
\$99.900
REF. 3510113

Pantalón
\$149.900
REF. 4312306





Blusa
\$99.900
REF. 3510113

Pantalón
\$149.900
REF. 4312306

Ref. 3510113 Blusa cuello camisero, Botonadura delantero, media manga, elástico en cintura en Algodón Stretch Ext: 14 Color: Naranja Tallas: XS-S-M-L-XL \$99.900

Ref. 4312306 Pantalón Palazzo abertura en bota, charretera en Twill Rayon Ext: 67 Color: Crema Tallas: 6-8-10-12-14-16 \$149.900





Blusón
\$ 159.900
REF. 3510116

Pantalón
\$ 149.900
REF. 4312306



Blusón
\$ **159.900**
REF. 3510116

Pantalón
\$ **149.900**
REF. 4312306



Ref. 3510116 Blusón cuello
camisero, manga 3/4, Botonadura
costados, en Rayón Ext: 212 Color:
Moca Tallas: XS-S-M-L-XL \$159.900

Ref. 4312306 Pantalón Palazzo
apertura en bota, charretera en Twill
Rayon Ext: 67 Color: Crema
Tallas: 6-8-10-12-14-16 \$149.900







Camisera
\$149.900
REF. 3510110

Pantalón
\$159.900
REF. 3310104



Camisera
\$149.900
REF. 3510110

Pantalón
\$159.900
REF. 3310104



Ref. 3510110 Camisera manga larga,
corte abierto en delantero puño y
cuello ancho en tejido tipo lino Ext: 44
Color: Natural Tallas: XS-S-M-L-
XL-XXL \$149.900

Ref. 3310104 Pantalón cintura Alta,
pierna angosta, bolsillo ribete tapa en
tipo gabardina Ext: 10 Color: Camel
Tallas: 6-8-10-12-14 \$159.900

A woman with long, wavy brown hair is standing in a three-quarter view, looking back over her shoulder. She is wearing a white, long-sleeved button-down shirt with the sleeves rolled up, tucked into a pair of beige, straight-leg trousers. She is also wearing bright orange high-heeled shoes with thin stiletto heels and ankle straps. She has a gold watch on her left wrist. The background consists of a light-colored wall with several large, arched openings, suggesting a classical or colonial architectural style. The lighting is bright and even, highlighting the textures of her clothing.

Camisera
\$149.900
REF. 3510110

Pantalón
\$159.900
REF. 3310104



Top
\$99.900
REF. 3510115

Jean
\$189.900
REF. 3810101

Top
\$ **99.900**
REF. 3510115

Jean
\$ **189.900**
REF. 3810101



Ref. 3510115 Top tirantes corte con escalerilla en delantero, en Rayon
Twill Ext: 44 Color: Natural Tallas: XS-S-M-L-XL \$99.900

Ref. 3810101 Jean Flare H/R Tono Industrial Denim Stretch
Ext: 52 Color: Indigo Tallas: 6-8-10-12-14-16-18 \$189.900

Top
\$99.900
REF. 3510115

Jean
\$189.900
REF. 3810101





Jean
\$189.900
REF. 3810101



Ref. 3810101 Jean Flare H/R
Tono Industrial Denim Stretch
Ext: 52 Color: Indigo Tallas:
6-8-10-12-14-16-18 \$189.900



A woman with long, wavy hair is posing in a cream-colored outfit. She is wearing a short-sleeved, textured blouse and wide-leg trousers. She is also wearing red high-heeled sandals. The background is a yellow building with white arches and columns.

Blusa
\$109.900
REF. 3510117

Pantalón
\$149.900
REF. 4312306

COSTURA
ACORDONADA





Blusa
\$109.900
REF. 3510117

Pantalón
\$149.900
REF. 4312306

Ref. 3510117 Blusa cuello T, costura acordonada en cuello y puño, cartera sobre hombro, base textil tipo Cupro Ext: 67 Color: Crema Tallas: XS-S-M-L-XL-XXL \$109.900

Ref. 4312306 Pantalón Palazzo abertura en bota, charretera en Twill Rayon Ext: 67 Color: Crema Tallas: 6-8-10-12-14-16 \$149.900

ebba KRITTERIUM



Enterizo
\$199.900
REF. 3410101



Enterizo
\$199.900
REF. 3410101



Enterizo
\$199.900
REF. 3410101

Enterizo
\$ **199.900**
REF. 3410101



Ref. 3410101 Enterizo strapple, prenses en Busto, Pantalón Wide Leg
en Rayón Ext: 22 Color: Unico Tallas: 6-8-10-12-14 \$199.900

Blusón
\$159.900
REF. 3510116


Pantalón
\$149.900
REF. 4312306





Blusón
\$159.900
REF. 3510116

Pantalón
\$149.900
REF. 4312306



Blusón
\$159.900
REF. 3510116

Pantalón
\$149.900
REF. 4312306



Blusón
\$159.900
REF. 3510116

Pantalón
\$149.900
REF. 4312306

Ref. 3510116 Blusón cuello camisero, manga 3/4, Botonadura costados, en Rayón Ext: 212 Color: Moca Tallas: XS-S-M-L-XL \$159.900

Ref. 4312306 Pantalón Palazzo abertura en bota, charretera en Twill Rayon Ext: 67 Color: Crema Tallas: 6-8-10-12-14-16 \$149.900



Camisera
\$99.900
REF. 3510121

Pantalón
\$149.900
REF. 4312306



Camisera
\$99.900
REF. 3510121

Pantalón
\$149.900
REF. 4312306

Ref. 3510121 Camisera cuello Mao, hombros rodados, en RayónExt: 22 Color: Unico Tallas: XS-S-M-L-XL-XXL \$99.900

Ref. 4312306 Pantalón Palazzo abertura en bota, charretera en Twill Rayon Ext: 67 Color: Crema Tallas: 6-8-10-12-14-16 \$149.900



Camisera
\$99.900
REF. 3510121

Pantalón
\$119.900
REF. 3310105





Camisera
\$99.900
REF. 3510121

Pantalón
\$119.900
REF. 3310105

Ref. 3510121 Camisera cuello Mao, hombros rodados, en RayónExt: 22 Color: Unico Tallas: XS-S-M-L-XL-XXL \$99.900

Ref. 3310105 Pantalón Wide Leg Pretina Alta, posterior resortado en base corrugada Ext: 15 Color: Negro Tallas: 6-8-10-12-14-16 \$119.900



ebba
VENTA POR CATÁLOGO

Tabla de Medidas

NUEVA COLECCIÓN

BLUSAS Y VESTIDOS

TALLAS	XS/6	S/8	M/10	L/12	XL/14	XXL/16
A. CONTORNO DE BUSTO	88-90	92-94	96-98	100-102	106-108	116-118
B. CONTORNO DE CINTURA	66-68	70-72	74-76	80-82	87-89	101-103
C. CONTORNO DE CADERA	98-100	102-104	106-108	112-114	119-121	133-135

JEAN Y PANTALÓN

TALLAS	6	8	10	12	14	16
A. CONTORNO DE CINTURA	66-68	70-72	74-76	78-80	82-84	86-88
B. CONTORNO DE CADERA	98-100	102-104	106-108	110-112	114-116	118-120
D. CONTORNO DE PIERNA	58	60	62	64	66	68

Conoce nuestra guía de medidas y encuentra la talla que mejor ajusta a tu cuerpo, ten en cuenta 5 aspectos importantes para que tus medidas no se vean alteradas.

A. Contorno de busto B. Contorno de cintura
C. Contorno de cadera D. Contorno de pierna



[/ebbaykriteriumcatalogo](#)